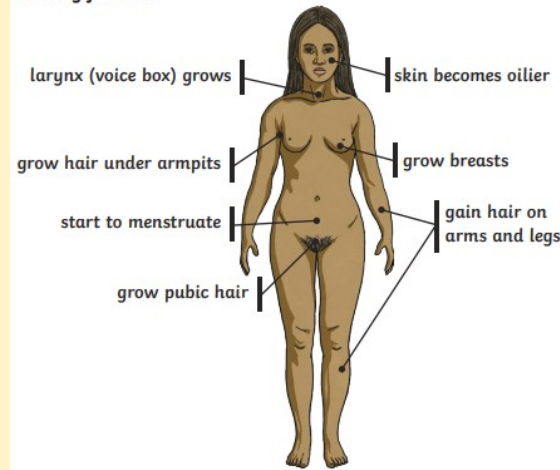


Knowledge Organiser

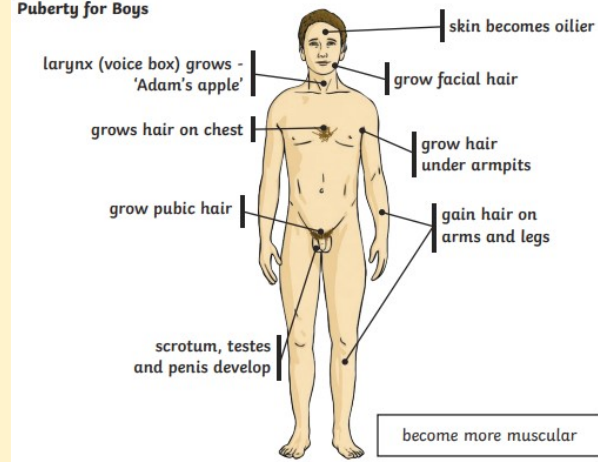
Vocabulary

Pictures	Key word	Definition
	Life Cycle	The changes a living thing goes through including reproduction.
	Fertilisation	The process of the male and female sex cells fusing together.
	Foetus	An unborn or unhatched offspring of a mammal, in particular an unborn human more than eight weeks after conception
	Gestation	The process or time when prenatal development takes place before birth.
	Reproduce	To produce young.
	Asexual reproduction	A process where one parent produces new life.
	Sexual reproduction	A process where two parents -one male and one female- are required to produce new life.
	Adolescence	The social and emotional stage of development between childhood and adulthood.
	Puberty	The physical stage of development between childhood and adulthood.
	Menstruation	When the female body discharges the lining of the uterus. This happens approximately once a month.
	Adulthood	The stage of development when a human is fully grown and mature.
	Life expectancy	The length of time, on average, that a particular animal is expected to live.

Puberty for Girls



Puberty for Boys

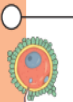


Further Reading

The Human Reproductive System

[Puberty - The human reproductive system - 3rd level Science Revision - BBC Bitesize](#)

fertilisation
The male and female sex cells fuse together.



prenatal
The cells develop and grow into a foetus inside the mother's uterus. After around nine months, the baby is born.



infancy
Rapid growth and development. Children learn to walk and talk.

childhood
Children learn new skills and become more independent.



adolescence
The body starts to change over a few years. The changes occur to enable reproduction during adulthood. Much more independent.



middle adulthood
Ability to reproduce decreases. There may be hair loss or hair may turn grey.



early adulthood
The human body is at its peak of fitness and strength.



late adulthood
Leading a healthy lifestyle can help to slow down the decline in fitness and health which occurs during this stage.



GLUE ME

Animals , including humans

Statutory requirements

Describe the changes as humans develop to old age.

QUESTIONS TO DEEPEN YOUR LEARNING

Character	Critical Thinking	Creativity	Communication	Citizenship	Collaboration
Why does the human life cycle end?	What is the difference between data and information?	Do all animals experience puberty in the same way?	Which mammal has the longest gestation period?	How do humans change during their lifetime?	What are the difficulties with old age and how can they be treated?