



RE- Philosophy
Knowledge Organiser
THE BIG QUESTION



Is believing in God reasonable?

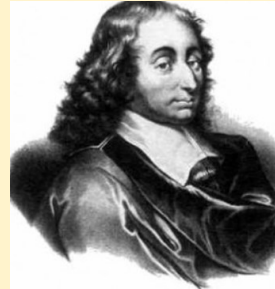
Vocabulary

	Humanist	A person having a strong interest in or concern for human welfare, values and dignity.
	Christian	A person who received a Christian baptism or is a believer in Christianity.
	Atheist	A person who disbelieves or lacks belief in the existence of God or gods.
	Agnostic	A person who believes that nothing is known of the existence or nature of God.
	faith	Strong belief in the doctrines of a religion, based on spiritual conviction rather than proof.
	Theist	Someone who believes in the existence of a god or gods.
	Reason	To try to understand and make judgements based on practical facts.
	evidence	Anything that helps to prove that something is or is not true.

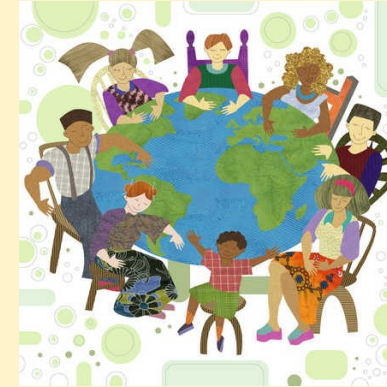
Year 5 Autumn term 1

Information we will learn:

- Definitions of beliefs.
- Pascal's Wager, as an example of a philosophical explanation.



Blaise Pascal 1623-1662



Philosophical debate

- Humanism, as an example of a philosophical stance.
- How to explain, using a range of reasons, whether a position or argument is coherent and logical.
- Use of philosophical vocabulary, e.g. knowing, truth, proof, reality, fact, opinion.
- How to form a coherent argument to support or oppose the existence of God.

How will we learn it? We will...

Engage, Enquire and Explore, Evaluate, Express!



What we will aim to do at the end of our learning:



- Explain different philosophical and theological answers to questions about a belief in God.
- Explain some of the different ways in which philosophers understand abstract concepts such as arguments for the existence of God e.g. Pascal's Wager and Humanism as a philosophical stance.
- Explain, using a range of reasons, whether a position or argument is coherent and logical.
- Link a range of different pieces of evidence together to form a coherent argument to support or oppose the evidence of God.



GLUE ME

Assessment

	Working Towards	At Expected	Above Expected
Can locate Bowthorpe on a map and describe its location.			
Can explain how the locality of Bowthorpe serves its people.			
Can persuade people Bowthorpe is a good place to live and identify its key features.			

QUESTIONS TO DEEPEN YOUR LEARNING

Character	Critical Thinking	Creativity	Communication	Citizenship	Collaboration